

Built for the Road Ahead



2017 Mobile Entertainment Product Line

# 2-WAY DualMirror™ TECHNOLOGY FOR SMARTPHONES

GREAT FOR:



MUSIC



NAVIGATION



VIDEO



GAMES

AND MORE...



MIRRORING AND CONTROL



MIRRORING ONLY

## 2-WAY DualMirror™

Dual multimedia receivers feature 2-Way DualMirror™ technology for mirroring (Apple & Android™), and control (Android™ only) of a smartphone. The connected smartphone's screen is mirrored onto the receiver's screen. The Android™ user can also navigate and control the connected smartphone directly from the receiver's touchscreen. The mirroring happens via HDMI® connection (wired or wireless), while the control of the smartphone from the receiver's touchscreen is available through Bluetooth® (HID). When Bluetooth® pairing the smartphone for the first time, the user will have to install a free app to calibrate the receiver's screen. This procedure will only have to be performed once. Once calibrated, the app will run in the background each time the phone is connected, without the need to manually activate it.

Note: The control portion of the 2-Way DualMirror™ feature is available for Android™ devices only, because Apple devices are not open source.

## WIRELESS CONNECTION

### SCREEN MIRRORING WIFI A/V DONGLE

Use the Screen Mirroring dongle to wirelessly connect a smartphone to enjoy the DualMirror™ feature. The dongle plugs into the receiver's HDMI input and communicates with the smartphone using WiFi Direct. See page 15 for details.



**2-WAY**  
DualMirror™

**Bluetooth®**

**RDS**

**WATTS**  
MAX POWER  
**200**

**CUSTOM**  
COLORS  
**RGB**

**STEERING**  
WHEEL  
CONTROLS

**FEATURES:**

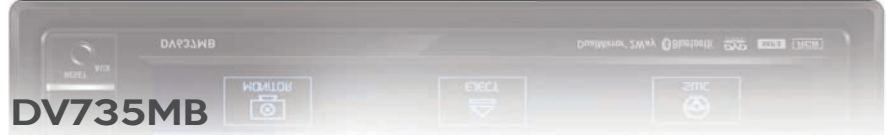
- 2-Way DualMirror™ feature for smartphones
- Built-in Bluetooth® Technology with ID3 Tag, audio streaming, and hands-free calling
- Screen mirroring input (HDMI)
- microSD card input for MP3/JPG playback (DV735MB only)
- RGB custom colors (16 million combinations)
- Front panel USB input (1A)
- Rear USB (2.1A) charge only
- Front panel 3.5mm aux input
- AM/FM RDS Tuner
- 3 Pairs of 4V RMS preamp outputs (F/R/S)
- Rear RCA A/V input and 2 RCA video outputs
- Built-in, programmable Steering Wheel Control Interface
- Digital sound processor with parametric EQ
- 7 EQ presets
- Variable subwoofer control
- 200 Watts (50Wx4)
- Remote control included

**NEW**

**DV637MB**

**6.2" MULTIMEDIA DVD RECEIVER**

DOUBLE-DIN | BLUETOOTH® | 2-WAY DualMirror™



**7" MULTIMEDIA DVD RECEIVER**

SINGLE-DIN | BLUETOOTH® | 2-WAY DualMirror™



Model# / Feature	DIN Size	Display	Wattage	DualMirror HDMI Input	Bluetooth <sup>1</sup>	RGB Custom Colors	RDS Tuner	USB Input	microSD CARD Input	EQ Presets	AUX Inputs	Video Outputs	Back-Up Camera Ready	Steering Wheel Control Ready	Preamp Outputs	Preamp Voltage
<b>DV637MB</b>	2-DIN	6.2"	200 (50 X 4)	YES	YES ID3	YES	YES	Front (1A) + Rear Charge (2.1A)		7	Front 3.5mm Rear RCA	2	YES	Built-in Programmable	3 (F/R/S)	4V
<b>DV735MB</b>	1-DIN	7"	200 (50 X 4)	YES	YES ID3	YES	YES	Front (1A) + Rear Charge (2.1A)	YES	7	Front 3.5mm Rear RCA	2	YES	Built-in Programmable	3 (F/R/S)	4V

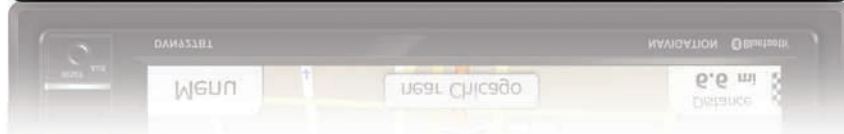
1 - HFP - Hands-Free Profile, A2DP - Advanced Audio Distribution Profile, AVRCP - Audio/Video Remote Control Profile

**NEW**

**DVN927BT**

**6.2" MULTIMEDIA DVD RECEIVER WITH NAVIGATION**

DOUBLE-DIN | BLUETOOTH®



**Bluetooth®**  
**RDS** **microSD**

**WATTS**  
MAX POWER  
**200**

**SCREEN MIRRORING**

**iGO primo**  
nextgen

**FEATURES:**

- Built-In Navigation (iGo Primo) w/ USA Map Data and TTS (Text to Speech)
- Built-in Bluetooth® Technology with ID3 tags, audio streaming, and hands-free calling with phonebook access
- Screen Mirroring (Android only)
- Front panel USB input (1A)
- Front panel 3.5mm aux input
- 3 Pairs of preamp outputs (F/R/S)
- Rear RCA A/V input and 1 RCA video output
- microSD card input (map only)
- Built-in programmable Steering Wheel Control Interface
- RGB custom colors for LED buttons
- Back up camera input (RCA)
- 10-Band graphic EQ
- 7 EQ presets
- AM/FM RDS Tuner
- 200 Watts (50x4)
- Remote control included

Model# / Feature	DIN Size	Display	Wattage	Built-in Navigation	Bluetooth	RGB Custom Colors	Screen Mirroring	RDS Tuner	USB Input	microSD CARD Input	EQ Presets	AUX Inputs	Video Outputs	Back-Up Camera Ready	Steering Wheel Control Ready	Preamp Outputs	Preamp Voltage
<b>DVN927BT</b>	2-DIN	6.2"	200 (50 X 4)	iGo Primo	YES ID3	YES	YES Android only	YES	Front (1A) )	YES MAP ONLY	7	Front 3.5mm Rear RCA	1	YES	Built-in Programmable	3 (F/R/S)	2V

1 - HFP - Hands-Free Profile, A2DP - Advanced Audio Distribution Profile, AVRCP - Audio/Video Remote Control Profile, PBAP - Phonebook Access Profile



## BUILT-IN BLUETOOTH® WIRELESS TECHNOLOGY

Dual receivers have built-in Bluetooth®, allowing the user to conveniently and safely integrate their smartphones and other devices into the car's audio system. The technology supports HFP, A2DP and AVRCP profiles.

### AUDIO STREAMING AND PLAYER CONTROL



Allows for wireless audio streaming from a mobile phone or a media player to the car's receiver. Control your media player directly from the receiver's front panel while also enjoying quality sound from your car's speakers. The new Dual multimedia receivers feature the latest AVRCP 1.5 profile for improved compatibility with the iPhone® and other new smartphones.

### HANDS-FREE CALLING (HFP)



Allows phone calls via the car's audio system using most Bluetooth® enabled cell phones, including the iPhone and other smartphones. Answer a call, redial, or manage call waiting – all while keeping your hands on the wheel and eyes on the road. The new Dual multimedia receivers feature the latest HFP 1.6 profile for best audio quality.

### CUSTOM COLORS



Offering millions of color combinations, the RGB feature allows the user to customize the color illumination for buttons and on-screen icons. Match the receiver's illumination to the vehicle's interior lighting, or create a color that fits the mood.

### BUILT-IN SWC INPUT



Upgrade your stereo without losing the convenience of controlling the receiver directly from the steering wheel. The new Dual multimedia receivers feature an integrated, programmable Steering Wheel Control (SWC) interface.

**NEW**

**DV527BT**  
**6.2" MULTIMEDIA DVD RECEIVER**  
 DOUBLE-DIN | BLUETOOTH®



**FEATURES:**

- Built-in Bluetooth® Technology with audio streaming and hands-free calling
- Front panel USB input (1A)
- Front panel 3.5mm aux input
- 3 Pairs of preamp (F/R/S) outputs
- Rear RCA A/V input and 2 RCA video outputs
- microSD card input
- Steering Wheel Control (SWC) input
- 7 EQ presets
- AM/FM Tuner
- Variable subwoofer control
- 200 Watts (50x4)
- Remote control included

**DV516BT**  
**7" MULTIMEDIA DVD RECEIVER**  
 SINGLE-DIN | BLUETOOTH®



Model# / Feature	DIN Size	Display	Wattage	Bluetooth¹	USB Input	microSD Card Input	EQ Presets	AUX Inputs	Video Outputs	Back-Up Camera Ready	Steering Wheel Control Ready	Preamp Outputs	Preamp Voltage
<b>DV516BT</b>	1-DIN	7"	200 (50 X 4)	YES	Front (1A)	YES	7	Front 3.5mm Rear RCA	2	YES	Built-in Programmable	3 (F/R/S)	2V
<b>DV527BT</b>	2-DIN	6.2"	200 (50 X 4)	YES	Front (1A)	YES	7	Front 3.5mm Rear RCA	2	YES	Built-in Programmable	3 (F/R/S)	2V

1 - HFP - Hands-Free Profile, A2DP - Advanced Audio Distribution Profile, AVRCP - Audio/Video Remote Control Profile



**WATTS**  
MAX POWER  
**200**

FEATURES:

- Built-in Bluetooth® Technology for hands-free calling and audio streaming
- Front panel USB (1A) and 3.5mm inputs
- 7 EQ presets (Classic, Rock, Pop, Beat, Jazz, Flat and User)
- Remote control included
- 200 Watts (50x4)

**NEW**  
**DXDM227BT**  
**CD RECEIVER**

DOUBLE-DIN | BLUETOOTH®



**WATTS**  
MAX POWER  
**200**

FEATURES:

- Built-in Bluetooth® Technology for hands-free calling and audio streaming
- Front panel USB (1A) and 3.5mm inputs
- 7 EQ presets (Classic, Rock, Pop, Beat, Jazz, Flat and User)
- Remote control included
- 200 Watts (50x4)

**NEW**  
**DC207BT**  
**CD RECEIVER**

SINGLE-DIN | BLUETOOTH®



**WATTS**  
MAX POWER  
**240**

FEATURES:

- Built-in Bluetooth® Technology for hands-free calling and audio streaming
- Direct USB control for most iPhone®/iPod® devices
- Pandora radio app control (iPhone via USB)
- Large 3.7" wide 10 character LCD
- Front Panel USB (1A) and 3.5mm inputs
- 7 EQ presets (Classic, Rock, Pop, Beat, Jazz, Flat and User)
- 240 Watts (60x4)
- Remote control included

**DC505iBT**  
**CD RECEIVER**

SINGLE-DIN | BLUETOOTH® | PANDORA® | 3.7" WIDE LCD



**XDM260**  
**CD RECEIVER**

SINGLE-DIN | 3.7" WIDE LCD



**NEW**

**DXRM57BT**  
**DIGITAL MEDIA RECEIVER**

DOUBLE-DIN | MECHLESS | BLUETOOTH®



**NEW**

**XRM47BT**  
**DIGITAL MEDIA RECEIVER**

SINGLE-DIN | MECHLESS | BLUETOOTH®



**WATTS**  
MAX POWER  
**60**

**FEATURES:**

- Front panel USB and 3.5mm inputs
- 1 Pair of preamp outputs
- 7 EQ presets (Classic, Rock, Pop, Beat, Jazz, Flat and User)
- Large 3.7" wide 10 character LCD
- 60 Watts (15x4)

**Bluetooth®** **WATTS**  
MAX POWER  
**200**

**FEATURES:**

- Built-in Bluetooth® Technology for hands-free calling and audio streaming
- Front panel USB (1A) and 3.5mm inputs
- 4 EQ presets (Jazz, Rock, Pop, Flat)
- 200 Watts (50x4)
- Remote control included

**Bluetooth®** **WATTS**  
MAX POWER  
**200**

**FEATURES:**

- Built-in Bluetooth® Technology for hands-free calling and audio streaming
- Front panel USB (1A) and 3.5mm inputs
- 4 EQ presets (Jazz, Rock, Pop, Flat)
- 200 Watts (50x4)
- Remote control included

Model# / Feature	DIN Size	Mechless	Wattage	LCD Display	Bluetooth <sup>1</sup>	Direct USB Control for iPod/iPhone	Pandora Link <sup>2</sup>	USB Input	EQ Presets	AUX Inputs	Preamp Outputs	Remote Control
<b>XRM47BT</b>	1-Din	YES	200 (50 X 4)	1 - Line 7 - Character	YES			Front (1A)	4	Front 3.5mm	2	YES
<b>DXRM57BT</b>	2-Din	YES	200 (50 X 4)	1 - Line 7 - Character	YES			Front (1A)	4	Front 3.5mm	2	YES
<b>DXDM227BT</b>	2-Din		200 (50 X 4)	1 - Line 10 - Character	YES			Front (1A)	7	Front 3.5mm	1	YES
<b>DC505iBT</b>	1-Din		240 (60 X 4)	3.7" Wide 10 - Character	YES	YES	YES	Front (1A)	7	Front 3.5mm	1	YES
<b>DC207BT</b>	1-Din		200 (50 X 4)	1 - Line 10 - Character	YES			Front (1A)	7	Front 3.5mm	1	YES
<b>XDM260</b>	1-Din		60 (15 X 4)	3.7" Wide 10 - Character				Front	7	Front 3.5mm	1	YES

1 - HFP - Hands-Free Profile, A2DP - Advanced Audio Distribution Profile, AVRCP - Audio/Video Remote Control Profile 2 - iPhone via USB



# DIGITAL COMPACT SERIES AMPLIFIERS

Specifically designed with installation in mind, these amps are perfect for tight spaces. Incredible sound quality from utilizing Philips home audio circuitry and low power consumption makes these amplifiers extremely flexible for custom applications.

## TWO, FOUR AND FIVE CHANNEL

### FEATURES:

- Class-D Digital
- Full MOSFET DC-DC PWM Power Supply
- Advanced SMD (Surface Mount Device) circuitry for better current flow and reduced RF and EMF interference.
- High-level inputs with auto turn-on
- Low-level inputs (RCA)
- High and low auto input sensitivity adjustment (DA560D only)
- Variable high/low pass crossover (35Hz - 350Hz, @12dB/octave)
- Variable high/low pass crossover (45Hz - 250Hz, @12dB/octave) (DA6002D, DA10004D only)
- Variable subsonic filter (20Hz - 50Hz, @12dB/octave) (DA560D only)
- Variable bass boost @45Hz (0dB - 12dB)
- Remote bass control included (DA560D only)
- 4 ga. power and ground terminal block
- 8 ga. speaker wire terminal block

### 2 CHANNEL DIGITAL AMPLIFIER

#### DA6002D

- 600 Watts Peak power
- 80 Watts x 2 RMS power @ 4 Ohms
- 120 Watts x 2 RMS @ 2 Ohms
- 240 Watts x 1 RMS power @ 4 Ohms (bridged)
- 1.8" H x 7.2" W x 5" D



**NEW**

### 4 CHANNEL DIGITAL AMPLIFIERS

#### DA10004D

- 1000 Watts Peak power
- 80 Watts x 4 RMS power @ 4 Ohms
- 120 Watts x 4 RMS @ 2 Ohms
- 240 Watts x 2 RMS power @ 4 Ohms (bridged)
- 1.8" H x 9.4" W x 5" D



**NEW**

### 5 CHANNEL DIGITAL AMPLIFIER

#### DA560D

- 1200 Watts Peak power
- 60 Watts x 4 RMS + 200 Watts + 1 power @ 4 Ohms
- 85 Watts x 4 RMS + 450 Watts x 1 power @ 2 Ohms
- 200 Watts x 2 RMS power @ 4 Ohms (bridged)
- 1.6" H x 10.2" W x 4.7" D



REMOTE BASS CONTROL

#### DA954D

- 600 Watts Peak power
- 100 Watts x 4 RMS power @ 4 Ohms
- 150 Watts x 4 RMS @ 2 Ohms
- 300 Watts x 2 RMS power @ 4 Ohms (bridged)
- 1.6" H x 10.2" W x 4.7" D



## MONO

### FEATURES:

- Class-D Digital
- Full MOSFET DC-DC PWM Power Supply
- High-level inputs with auto turn-on
- Low-level inputs (RCA)
- Variable low-pass crossover (35Hz - 350Hz, @12dB/octave)
- Variable bass boost @45Hz (0dB - 12dB)
- Variable subsonic filter (20Hz - 50Hz @ 12dB/octave)
- Remote bass control included
- 4 ga. power and ground terminal block
- 4 ga. speaker wire terminal block

### MONO DIGITAL AMPLIFIERS

#### DA501D

- 1200 Watts Peak Power
- 300 Watts x 1 RMS power @ 4 Ohms
- 500 Watts x 1 RMS power @ 2 Ohms
- 1.6" H x 7.9" W x 4.7" D



REMOTE BASS CONTROL

#### DA801D

- 1750 Watts Peak Power
- 400 Watts x 1 RMS power @ 4 Ohms
- 800 Watts x 1 RMS power @ 2 Ohms
- 1.6" H x 9" W x 4.7" D



REMOTE BASS CONTROL

Model# / Feature	No. of Channels	Class	RMS Power (4 Ω)	RMS Power (2 Ω)	RMS Power (4 Ω Bridged)	Maximum Power	High/Low Inputs	Crossover HPF / LPF	Remote Bass Control	Dimensions (HxWxD)
DA6002D	2	Digital	80W x 2	120W x 2	240W x 1	600W	Yes	HPF/LPF		1.8" x 7.2" x 5"
DA10004D	4	Digital	80W x 4	120W x 4	240W x 2	1000W	Yes	HPF/LPF		1.8" x 9" x 5"
DA954D	4	Digital	100W x 4	150W x 4	300W x 2	600W	Yes	HPF/LPF		1.6" x 9" x 4.7"
DA501D	1	Digital	300W x 1	500W x 1		1200W	Yes	LPF	Yes	1.6" x 7.9" x 4.7"
DA801D	1	Digital	400W x 1	800W x 1		1750W	Yes	LPF	Yes	1.6" x 9" x 4.7"
DA560D	5	Digital	60W x 4 Sub 200x2	85W x 4 Sub 450W x 1	200W x 2	400W + Sub 800W	Yes	HPF/LPF	Yes	1.6" x 10.2" x 4.7"

## DIGITAL COMPACT SERIES AMPLIFIERS

Specifically designed with installation in mind, these amps are perfect for tight spaces. Incredible sound quality from utilizing Philips home audio circuitry and low power consumption makes these amplifiers extremely flexible for custom applications.

Shown to scale with iPhone® 5



### DIGITAL LOW PROFILE SERIES

#### DA704L | 4 CHANNEL

- 400 Watts Peak Power
- 100 Watts x 4 RMS power @ 4 Ohms
- 150 Watts x 4 RMS power @ 2 Ohms
- 1.5" H x 5.9" W x 3" D



#### DA301L | MONO

- 700 Watts Peak Power
- 150 Watts x 1 RMS power @ 4 Ohms
- 350 Watts x 1 RMS power @ 2 Ohms
- 1.5" H x 5.9" W x 3" D



#### FEATURES:

- Class-D Digital
- Full MOSFET DC-DC PWM Power Supply
- Advanced SMD (Surface Mount Device) circuitry for better current flow and reduced RF and EMF interference
- High-level inputs with auto turn-on, low-level inputs (RCA)
- Variable high-pass crossover (35Hz – 250Hz, @12dB/octave (DA704L only)
- Variable low-pass crossover (35Hz – 250Hz, @12dB/octave
- Variable bass boost @45Hz (0dB – 12dB)
- Variable subsonic filter (20Hz – 50Hz @ 12dB/octave) (DA301L only)
- Quick disconnect power, ground and speaker wire harness

### XPR SERIES

#### XPR522 | 2 CHANNEL AMPLIFIER

- 600 Watts peak power
- 150 Watts x 2 @ 4 Ohms
- 300 Watts x 2 @ 2 Ohms
- 600 Watts x 1 @ 4 Ohms (bridged)
- Variable high and low-pass crossovers
- High and low level inputs
- 2.76" H x 9.09" W x 10.55" D



#### XPR540 | 4 CHANNEL AMPLIFIER

- 1200 Watts peak power
- 150 Watts x 4 @ 4 Ohms
- 300 Watts x 4 @ 2 Ohms
- 600 Watts x 2 @ 4 Ohms (bridged)
- Variable high and low-pass crossovers
- High and low level inputs
- 2.76" H x 13.85" W x 10.55" D



Model# / Feature	No. of Channels	Class	RMS Power (4 Ω)	RMS Power (2 Ω)	RMS Power (4 Ω Bridged)	Maximum Power	High/Low Inputs	Crossover HPF / LPF	Remote Bass Control	Dimensions (HxWxD)
DA704L	4	Digital	100W x 4	150W x 4		400W	Yes	HPF/LPF		1.5" x 5.9" x 3"
DA301L	1	Digital	150W x 1	350W x 1		700W	Yes	LPF		1.5" x 5.9" x 3"
XPR522	2	AB	150W x 2	300W x 2	600W x 1	600W	Yes	HPF/LPF		2.76" x 9.09" x 10.55"
XPR540	4	AB	150W x 4	300W x 4	600W x 2	1200W	Yes	HPF/LPF		2.76" x 13.85" x 10.55"

### SOUND PROCESSOR

#### BRP9004 | BASS RESTORATION PROCESSOR

- Maximum input/output levels: 15V RMS/13.5V RMS
- Signal to noise ratio: -130dB
- Frequency response: 10Hz – 100kHz, +/-1dB
- Variable low frequency boost (35Hz ~ 80Hz)
- Built-in line driver (2V, 5V, 7V, 10V)
- Balanced/unbalanced RCA inputs

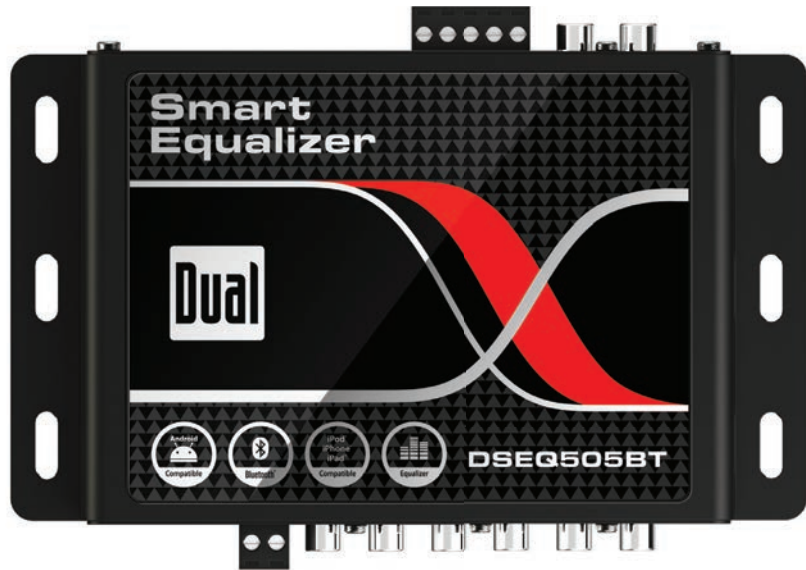




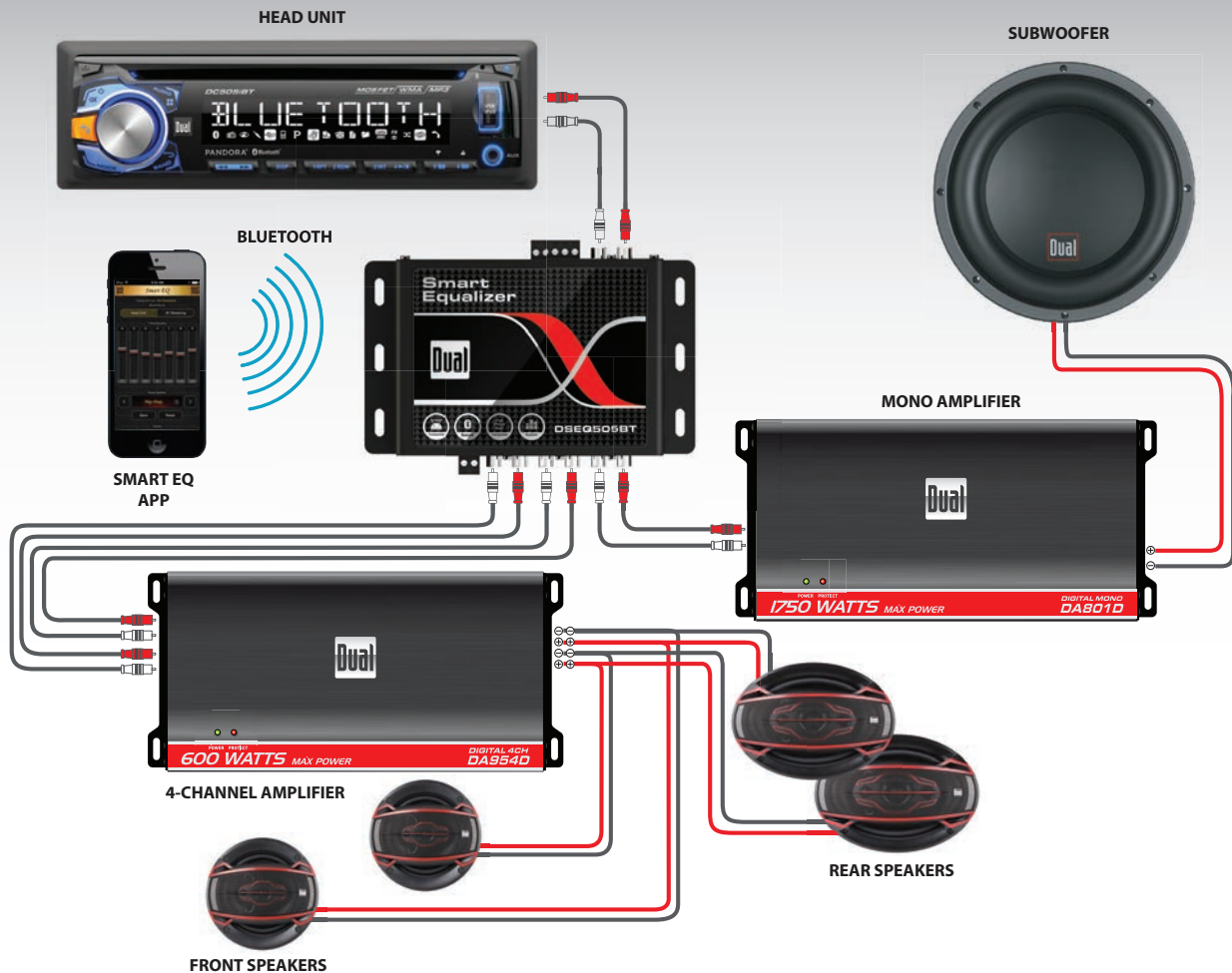
# DSEQ505BT WIRELESS (BLUETOOTH®) SMART EQ PROCESSOR FOR SMARTPHONES

**FEATURES:**

- Control balance, fader and 7 EQ presets with presets from a Bluetooth® connected device (Smart EQ app required, free download on iTunes and Google Play)
- Works with Apple® and Android™ smartphones and tablets, including iPhone® and iPad®
- Bluetooth® (A2DP) audio streaming with volume control
- 3 Pairs of RCA preamp outputs (F/R/S)
- Subwoofer gain control
- Signal sensing for auto amp remote turn-on
- High and low level inputs



**TYPICAL INSTALLATION DIAGRAM**



## DLS SPEAKER SERIES

**DLS694****6" X 9" 4-WAY  
SPEAKERS**

- 200 Watts peak power
- 50 Watts RMS
- 58mm Mylar® dome midrange
- Dual 20mm Piezo tweeters
- 3.07" mounting depth

**DLS574****5" X 7" / 6" X 8"  
MULTI-FIT 4-WAY  
SPEAKERS**

- 160 Watts peak power
- 40 Watts RMS
- 35mm Mylar® dome midrange
- Dual 15mm Piezo tweeters
- 2.28" mounting depth

**DLS654****6.5" 4-WAY  
SPEAKERS**

- 160 Watts peak power
- 40 Watts RMS
- 35mm Mylar® dome midrange
- Dual 15mm Piezo tweeters
- 2.17" mounting depth

**DLS524****5.25" 4-WAY  
SPEAKERS**

- 120 Watts peak power
- 30 Watts RMS
- 30mm Mylar® dome midrange
- Dual 15mm Piezo tweeters
- 1.97" mounting depth

## DLS SPEAKER SERIES

**NEW****DLS464****4" X 6" 4-WAY SPEAKERS**

- 80 Watts peak power
- 20 Watts RMS
- 30mm Mylar® dome midrange
- Dual 15mm Piezo tweeters
- 1.81" mounting depth

**NEW****DLS404****4" 4-WAY SPEAKERS**

- 80 Watts peak power
- 20 Watts RMS
- 30mm Mylar® dome midrange
- Dual 15mm Piezo tweeters
- 1.83" mounting depth



## DS SPEAKER SERIES

**DS652****6.5" 2-WAY SPEAKERS**

- 100 Watts peak power
- 50 Watts RMS
- 86 dB sensitivity
- 1" Tweeter
- 2" Mounting depth



Model# / Feature	Size	Type	RMS Power	Peak Power	Woofer	Midrange	Tweeter	Sensitivity	Frequency Response	Cutout Diameter	Mounting Depth
DLS694	6" X 9"	4-Way	50W	200W	Polypropylene	58mm Mylar Dome	(2) 20mm Piezo	89dB	50Hz - 20kHz	6" x 8.58"	3.07"
DLS574	5" x 7" / 6" X 8"	4-Way	40W	160W	Polypropylene	35mm Mylar Dome	(2) 15mm Piezo	87dB	70Hz - 20kHz	5" x 7.1"	2.28"
DLS654	6.5"	4-Way	40W	160W	Polypropylene	35mm Mylar Dome	(2) 15mm Piezo	87dB	70Hz - 20kHz	5.6"	2.17"
DLS524	5.25"	4-Way	30W	120W	Polypropylene	30mm Mylar Dome	(2) 15mm Piezo	85dB	75Hz - 20kHz	4.5"	1.97"
DLS464	4" x 6"	4-Way	20W	80W	Polypropylene	30mm Mylar Dome	(2) 15mm Piezo	85dB	105Hz - 20kHz	3.7" x 5.6"	1.81"
DLS404	4"	4-Way	20W	80W	Polypropylene	30mm Mylar Dome	(2) 15mm Piezo	85dB	123Hz - 20kHz	3.7"	1.83"



**DSW121D**  
**12" SUBWOOFER**  
**DSD122D**  
**12" DVC SUBWOOFER**

- 800 Watts peak power
- 400 Watts RMS
- 75 oz. magnet
- Pressed paper cone
- Extra wide rubber surround
- Stamped steel frame
- Works in sealed and ported enclosures
- 4-Layer 2" copper voice coil with aluminum former



**DSW101D**  
**10" SUBWOOFER**  
**DSD102D**  
**10" DVC SUBWOOFER**

- 700 Watts peak power
- 350 Watts RMS
- 75 oz. magnet
- Pressed paper cone
- Extra wide rubber surround
- Stamped steel frame
- Works in sealed and ported enclosures
- 4-Layer 2" copper voice coil with aluminum former

Model# / Feature	Size	RMS Power	RMS Power	DVC (Dual Voice Coil)	Voice Coil	Impedance	Sensitivity	Frequency Response	Magnet Weight	Cut-Out Diameter	Mounting Depth
<b>DWS121D</b>	12"	400W	800W		2"	4 Ohm	87.3 dB	30Hz-500Hz	75 oz.	10.95"	6.11"
<b>DSD122D</b>	12"	400W	800W	YES	2"	2 Ohm/coil	88.9 dB	30Hz-500Hz	75 oz.	10.95"	6.11"
<b>DWS101D</b>	10"	350W	700W		2"	4 Ohm	86.8 dB	32Hz-500Hz	75 oz.	9.05"	5.7"
<b>DSD102D</b>	10"	350W	700W	YES	2"	2 Ohm/coil	87.2 dB	32Hz-500Hz	75 oz.	9.05"	5.7"

## SBX650BT

### 6.5" 2-WAY SPEAKER SYSTEM

- Wireless Bluetooth® music streaming
- 6.5" full range speaker and 1" horn tweeter for balanced sound
- Built-in amplifier with 100W Max output power
- Play music from iPod®/iPhone® and other media devices using the 3.5mm AUX input (cable included)
- Play MP3 files directly from SD/MMC cards or USB thumb drives (1A USB charge)
- Built-in FM Radio Receiver with auto scan and memory function
- RCA AUX input



## BP1204

### 12" SUBWOOFER BANDPASS ENCLOSURE WITH BLUE illuminITE®

- 1100 Watts peak power
- 600 Watts RMS
- (2) 12" Low-Q optimized drivers with 45 oz. magnets
- Brushed aluminum injection-molded woofer cones
- Dual acrylic viewing windows
- Computer-tuned acoustic chamber
- Curved plexiglass viewing window
- illuminITE® cool blue illumination

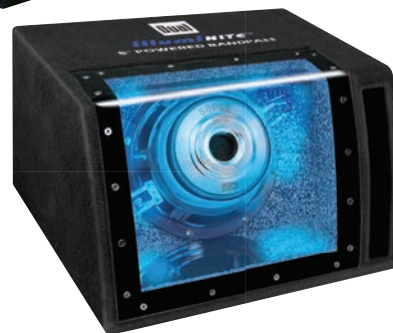


## SBP8A

### 8" AMPLIFIED BANDPASS ENCLOSURE WITH BLUE illuminITE®

- 160 Watts peak power
- 80 Watts RMS
- 8" high-performance driver with 30oz. magnet
- ATCS – Advanced Temperature

- Control System
- 4th order Bandpass enclosure design
- High and low-level inputs
- illuminITE® cool blue illumination



## SBX100

### 10" SUBWOOFER IN A VENTED ENCLOSURE



## SBX101

### 10" SUBWOOFER IN A TUNED PORTED ENCLOSURE



#### FEATURES:

- 500 Watts peak power
- 175 Watts RMS
- Polypropylene woofer cone (SBX100)
- Aluminum woofer cone (SBX101)
- Rubber surround
- Sensitivity: 88dB
- Frequency response: 25Hz – 500Hz

## ALB12

### 12" AMPLIFIED SUBWOOFER IN A TUNED PORTED ENCLOSURE

- 300 Watts peak power
- 60 Watts RMS
- MOSFET powered amplifier
- Frequency response: 20Hz – 200Hz
- Variable low-pass crossover: 40Hz – 200Hz
- 30oz. magnet



ALB12 Amplifier



## **NEW** XCAM500 UNIVERSAL WIRELESS BACKUP CAMERA

- Low profile surface-mount design
- Wide angle lens (170 degree) for greater behind vehicle visibility
- Standard RCA video connection
- Low LUX (<0.5) sensor for improved night viewing
- IP rating: IP67
- Image sensor: CMOS
- Back-up parking lines (On/Off)

## **NEW** BUCAM200 UNIVERSAL BACKUP CAMERA

- Low profile surface-mount design
- Wide angle lens (170 degree) for greater behind vehicle visibility
- Standard RCA video connection
- Low LUX (<0.5) sensor for improved night viewing
- IP rating: IP67
- Image sensor: CMOS
- Back-up parking lines (On/Off)

## DMH25 SCREEN MIRRORING WIFI A/V DONGLE

- Plugs into the HDMI input on the compatible in-car receiver
- Communicates with a smartphone or tablet via WiFi Direct (2.4GHz)
- Supports up to 1080p video streaming
- Works with most Apple and Android devices
- Compatible with Miracast, Airplay, Airplay Mirroring, and DLNA standards
- Firmware update over-the-air (OTA)
- For use with Dual multimedia receivers, headrest and ceiling mounted monitors with DualMirror™

## DMC15 SCREEN MIRRORING WIRELESS A/V ADAPTER

- Plugs into the composite inputs on the back of the compatible in-car receiver
- Communicates with a smartphone or tablet via WiFi (5GHz or 2.4GHz)
- Works with most Apple and Android devices
- Compatible with Miracast, Airplay, Airplay Mirroring and DLNA standards
- For use with multimedia receivers, headrest and ceiling mounted monitors with the composite A/V inputs



## INDOOR/OUTDOOR WALL MOUNTABLE SPEAKERS

These versatile, weather-resistant speakers can be used indoors or outdoors. 3-way component speakers deliver high-quality sound for both interior and exterior environments. Mounting brackets are included for on-wall and ceiling installation, allowing for many convenient applications from home theater surround sound to outdoor patio areas.

Available in 5 ¼" and 4" sizes in both black and white.

### LU43PB (Black) LU43PW (White) 4" 3-WAY COMPONENT SPEAKERS

- RMS power: 50 Watts
- Peak power: 100 Watts
- Dimensions: 8.25" h x 5.25" w x 5.25" d
- Sold as a pair



### LU53PB (Black) LU53PW (White) 5 ¼" 3-WAY COMPONENT SPEAKERS

- RMS power: 60 Watts
- Peak power: 125 Watts
- Dimensions: 10.13" h x 7.25" w x 7.25" d
- Sold as a pair



Porch



Home Theater



Home Gym

## WEATHER-RESISTANT OUTDOOR ROCK SPEAKER

This Outdoor Rock Speaker is weather-resistant for use on the deck, by the pool or in the garden. The rock-like earth tone enclosure blends well with any outdoor décor and surroundings, while its 6.5" 2-way speaker provides high-quality sound.



### LUR66E

- Weather-resistant, fiber reinforced polyresin composite enclosure withstands rain, snow, sun and coastal environments
- Rust-resistant aluminum speaker grille
- 6.5" Woofer with rubber surround
- 3/4" Teteron dome tweeter
- RMS power: 60 watts
- Peak power: 150 watts
- Compact size: 9.63" h x 8.75" w x 8.75" d
- 10" Burial-rated pigtail speaker cable
- Sold individually

## XGPS150A

### UNIVERSAL GPS RECEIVER WITH BLUETOOTH® WIRELESS TECHNOLOGY

- High-sensitivity WAAS GPS receiver works with most apps
- Bluetooth® wireless connectivity
- Certified to work with iPad®, iPod® touch and iPhone® devices
- Compatible with Bluetooth® enabled Android™, Windows™ and OS X devices
- Rechargeable battery lasts up to 8.5 hours
- Charging is simple via the included USB charging cable
- Includes a non-slip pad
- Includes a cigarette lighter adapter for charging (12-30VDC input, 2.1A output)



XGPS150A inside the included non-slip pad



Small, portable design 2.25"x 2.25"x.75"



Shown in a car, inside the included non-slip pad



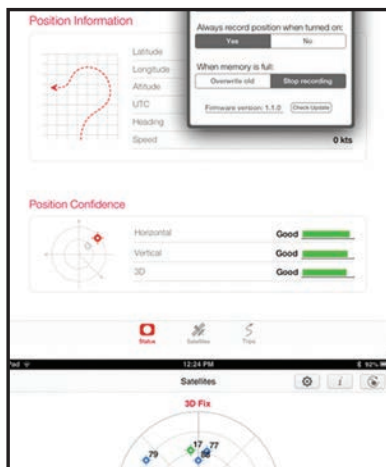
What can you do with it?



## NEW XGPS165 SkyPro™ II GPS RECEIVER



## XGPS160 SkyPro™ GPS RECEIVER



XGPS160 Status Tool App

### FEATURES:

- WAAS GPS receiver
- 3D AHRS Gyro capability (XGPS165 only)
- Can be used with GoPro® HERO4 cameras (XGPS165 only)
- Simultaneous GPS and GLONASS reception
- Up to 10 position updates per second
- Bluetooth® connectivity to up to 5 devices
- Internal memory for route recording
- For Apple and Android devices
- Works with marine chart plotting apps and other apps that require GPS (navigation, car racing, hunting, golfing, etc.)
- Built-in battery lasts up to 10 hours
- Free status tool app
- Non-slip pad included
- 12-28V charger included (12-30VDC input, 2.1A output)

## HIGH-ACCURACY GPS RECEIVER

### **NEW** XGPS500 FIELDPRO HIGH-ACCURACY GPS RECEIVER

- Accuracy of <1 meter when stationary (SBAS + PPP), 2 meters while in motion (SBAS)
- Supports GPS with SBAS (WAAS/EGNOS/MSAS), GLONASS, and QZSS satellite systems
- Position sample rate of 10 Hz
- Logs up to 200 hours of position data
- Supports raw data output for RTK and post-processing applications
- Connects to Apple iOS and Android devices via Bluetooth®
- Binary raw data streaming for RTK applications
- 10-50cm accuracy capable via 3rd party RTK or post-processing
- Connects to Windows and Linux devices via USB or Bluetooth®
- Supports up to 5 simultaneous Bluetooth® connections
- IPX5 water resistance for outdoor applications
- Up to 25 hours of battery life for all day use in the field
- Compact size for maximum portability: 3" x 2.4" x 0.7" (76.5mm x 61.5mm x 17.5mm)
- Free status tool app



## ADS-B GPS RECEIVERS

### **XGPS190** GPS + DUAL-BAND ADS-B + AHRS



#### FEATURES:

- ADS-B Weather (FIS-B)
- ADS-B Traffic (ADS-R/TIS-B)
- Dual band reception - 978 MHz and 1090 MHz broadcasts
- AHRS (XGPS190 only)
- WAAS GPS receiver
- Use with the included antenna or connect to an external antenna
- Bluetooth® wireless connectivity:
  - Connects up to two mobile devices simultaneously
  - Leaves WiFi open to connect to other devices or networks

### **NEW** XGPS170D GPS + DUAL-BAND ADS-B



- Apple iPad®, iPod touch®, iPhone® and Android support
- The most widely supported ADS-B receiver – check the website for the latest list of supported apps
- Rechargeable battery lasts up to 5 hours of continuous use
- Internal memory for route recording
- Charge using the included 12-30VDC adapter or the included wall charger
- Free status tool app

